

ITS.
Implants for Trauma Surgery

PROXIMAL HUMERUS SOLUTIONS



Made in **Austria**

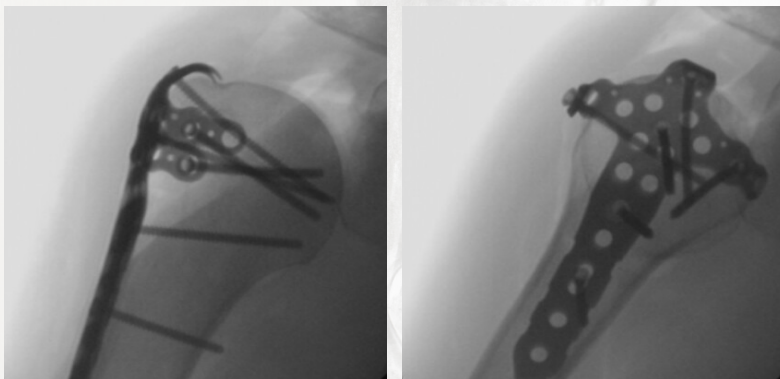
VERSATILE SOLUTION FOR PROXIMAL HUMERAL FRACTURES

○ PHL PHX Flanges

The I.T.S. Proximal Humeral Locking System Phoenix - Flanges aims to provide simplified solutions to complex problems. This versatile system enables the treatment of various proximal humeral fractures, with the contourable anterior/posterior flanges facilitating the proper fixation of the entire humeral head.



The plate is available in 3 different versions, 3 lengths (4,5 & 7 holes) and 2 flange widths (Small, Large) to meet the needs of each specific fracture pattern. All three flanges enable the plate to cradle and support the humeral head without relying solely on screw fixation.



Radiographs reveal placement of the implant. For clarity, only the most critical screws are shown, including the tuberosity, calcar, and oblong hole screws.

Adhering to the technology principles of all I.T.S. plates, this system offers the option of polyaxial locking capabilities in all screw holes (except oblong). The free choice of screw placement gives surgeons options to select the best screw type and angle, allowing for optimal positioning of the humeral head and maximum support, even for poor bone quality.



LOCKING
Cortical
D=3.5



37351

LOCKING
Cancellous
D=4.5



37422

NON-LOCKING
Cortical
D=3.5



3235

PROXIMAL HUMERUS FRACTURES

○ PHL PHX Standard

With the addition of the PHL Phoenix- Standard, the system includes a standard plate without flanges for the more common, simple fractures.

LOCKING
L Screw
5mm

-xx-N

LOCKING
L Screw
2mm

-xx-N

LOCKING
L Screw
5mm

SI-xx



The PHL Standard Phoenix features a wider head with multiple II hole options, including multiple options for the medial calcar screw: Together with polyaxial locking technology, this allows for the creation of a diverging and converging pattern of screws to best capture and support the complete humeral head.



The unilateral plate is available in 4 different lengths with an optional drill-block available.



- Precise drilling and screw placement
- Easy assembly and secure fixing of the sleeves in the drill block
- Universally usable on both sides



Disclaimer:

The intended users are limited to medical personnel with appropriate product training by the medical product consultants or knowledge of the surgical procedure to be applied. The medical staff must ensure that the use of I.T.S. GmbH medical devices is appropriate, taking into account the medical condition and medical history of the patient. Prior to product use, medical personnel must refer to complete information on product label and in IFU, including, but not limited to, indications, contraindications, warnings and preventative measures, and cleaning and sterilization instructions. Product availability is dependent on country registrations and clearances. For more information, please visit www.its-implant.com or contact us at office@its-implant.com. All information herein is the intellectual property of I.T.S. GmbH.



HEADQUARTER

I.T.S. GmbH
Autal 28, 8301 Lassnitzhöhe, Austria
Tel.: +43 (0) 316/ 211 21 0
office@its-implant.com
www.its-implant.com

I.T.S. USA
1778 Park Avenue N - Suite 200
Maitland, FL 32751
Tel.: 407-971-8054
info@its-implantusa.com
www.its-implant.com

Order No. PHLPHX-BIC-0624-US
Edition: June/2024

© I.T.S. GmbH Graz/Austria 2024
Subject to technical alterations, errors
and misprints excepted.

ITS.
Implants for Trauma Surgery



www.its-implant.com



ITS. GmbH



ITS. Implants



its.implants